

DESIGNED BY: W. J. DeLoe
 CHECKED BY: J. A. ...
 APPROVED BY: J. A. ...

APPROVED: AICHISON-TORBEK & SANTA FE RAILWAY CO.
 BY: [Signature]
 TITLE: [Title]

APPROVED: CITY OF SAN BERNARDINO
 PLAN NO. ...
 APPROVED: [Signature]
 CITY ENGINEER
 REGISTERED CIVIL ENGINEER NO. 12,559

DELEUX, CARTER & COMPANY
 SAN FRANCISCO, CALIFORNIA

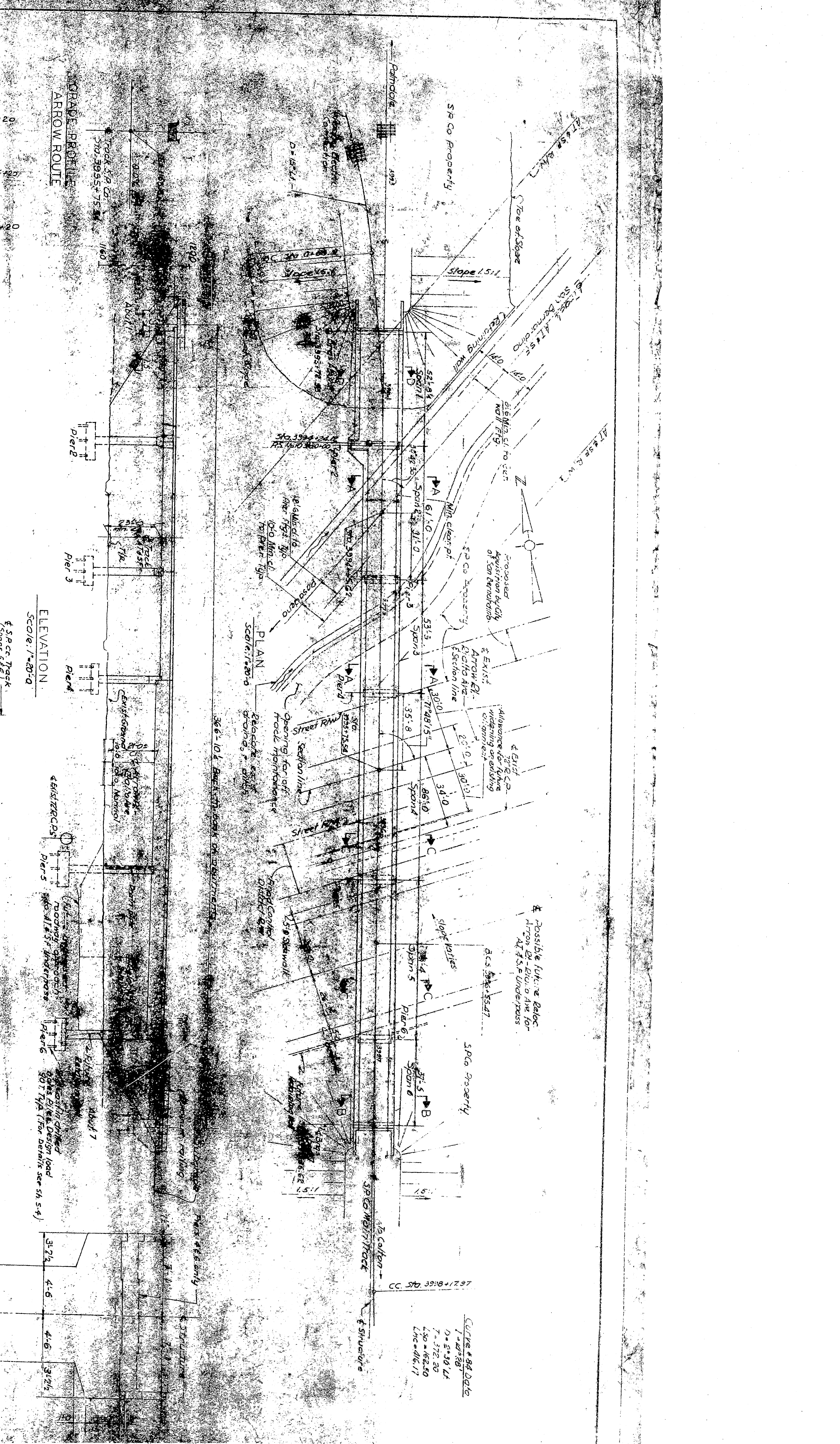
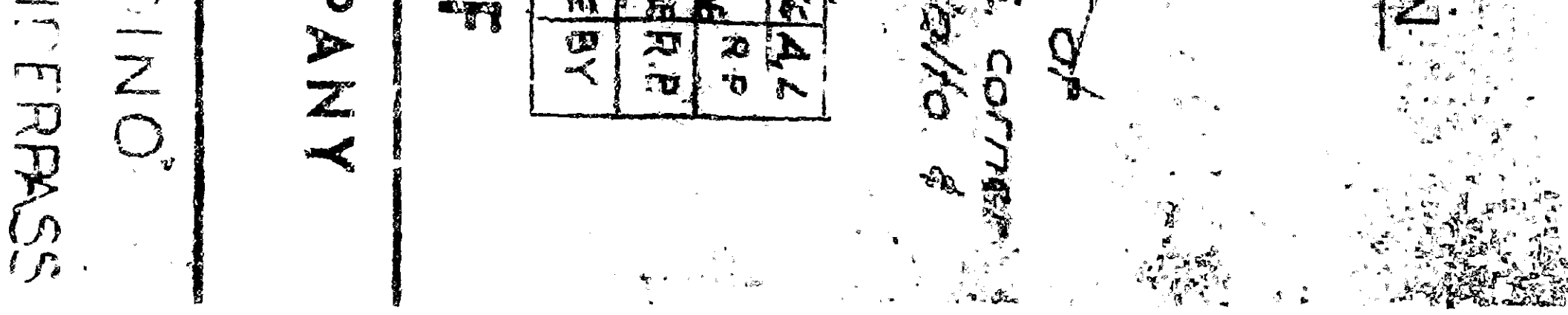
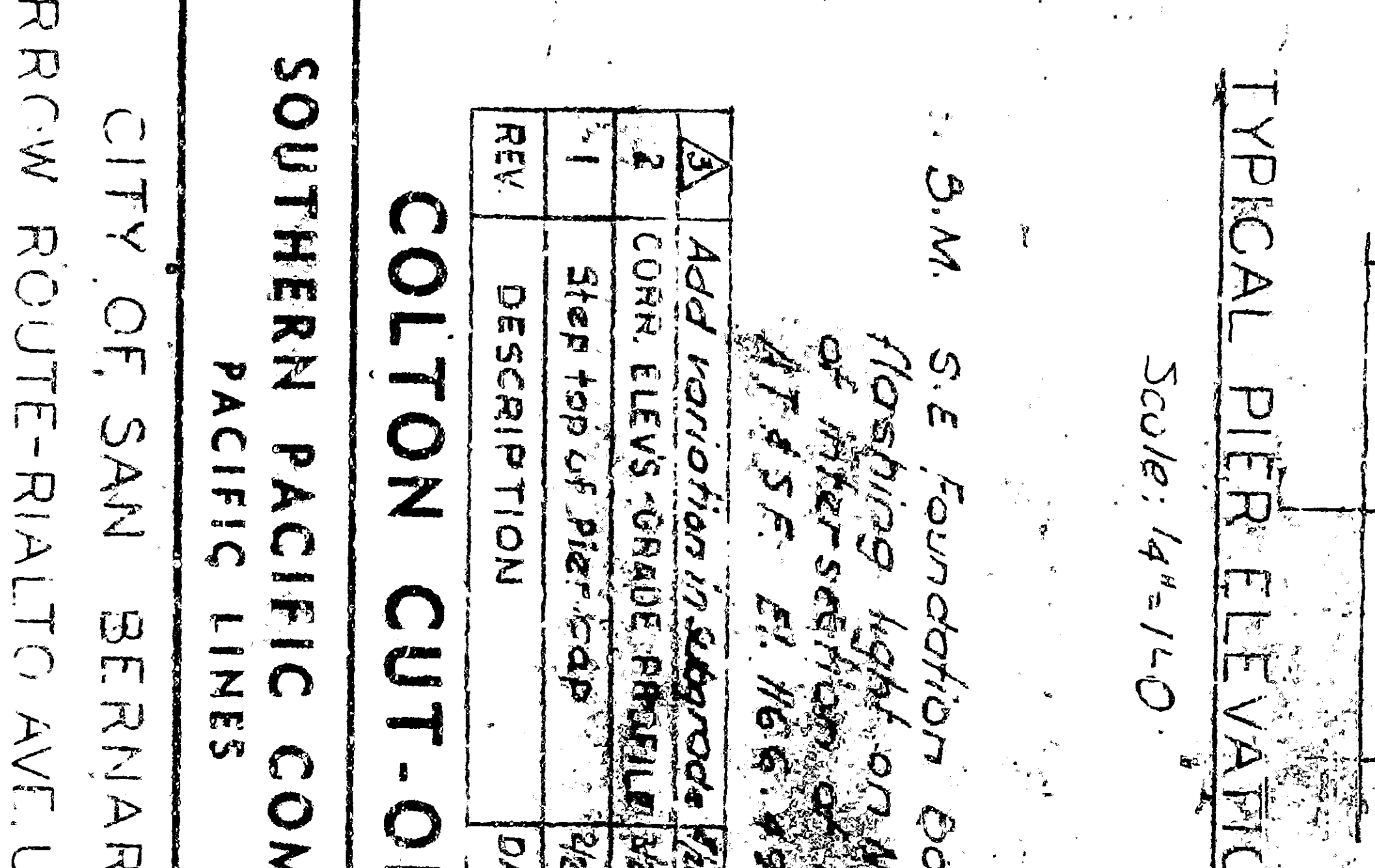
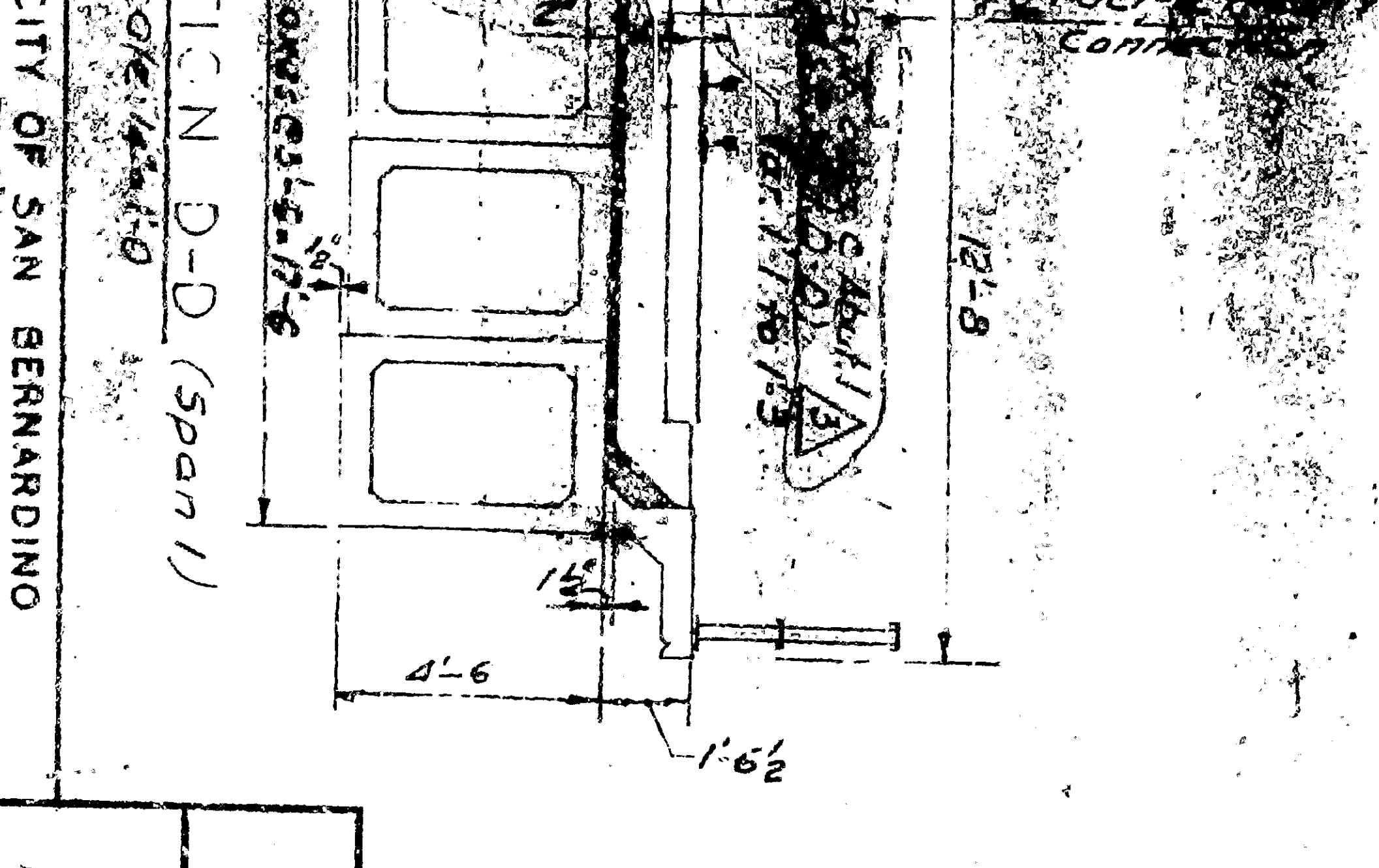
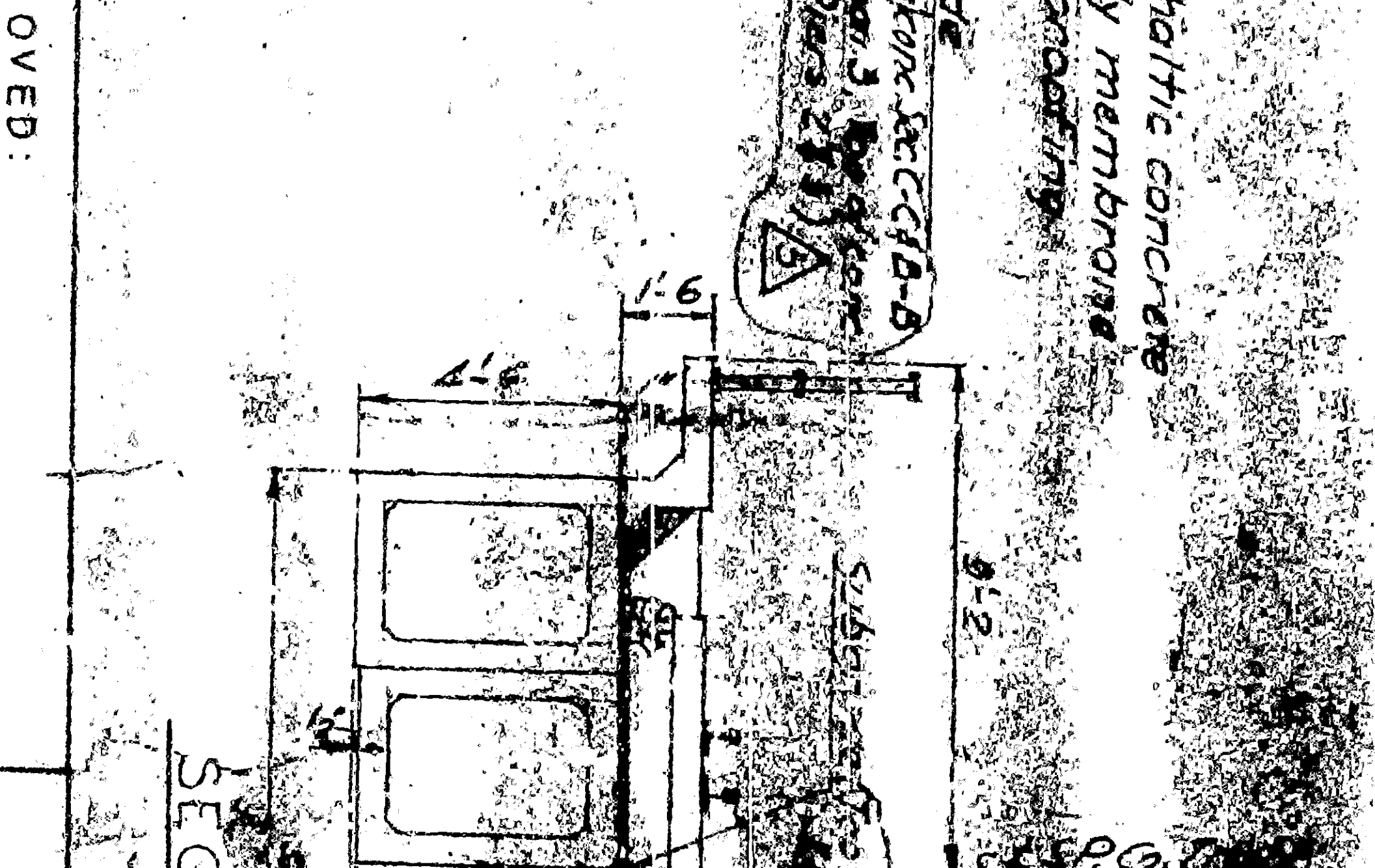
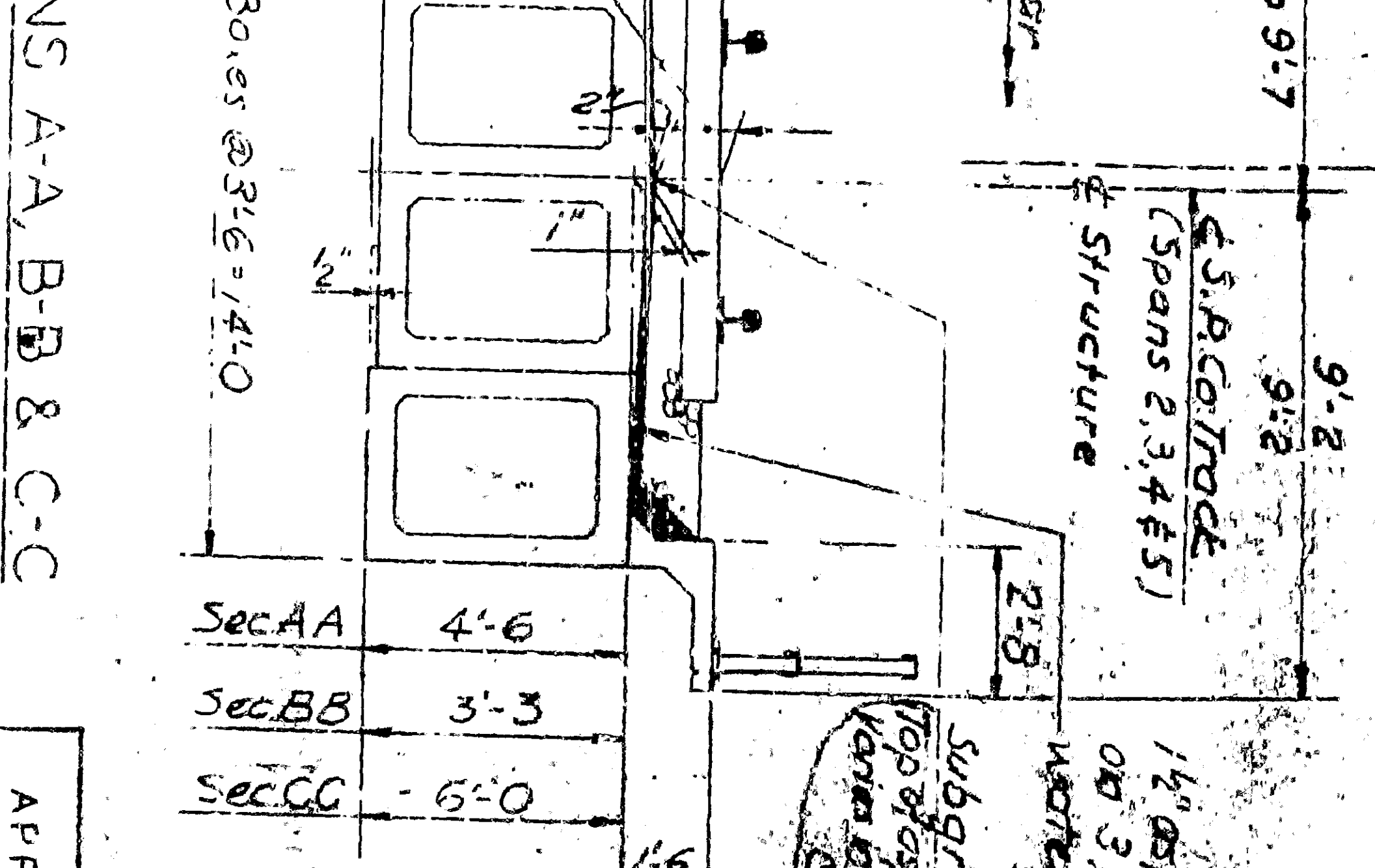
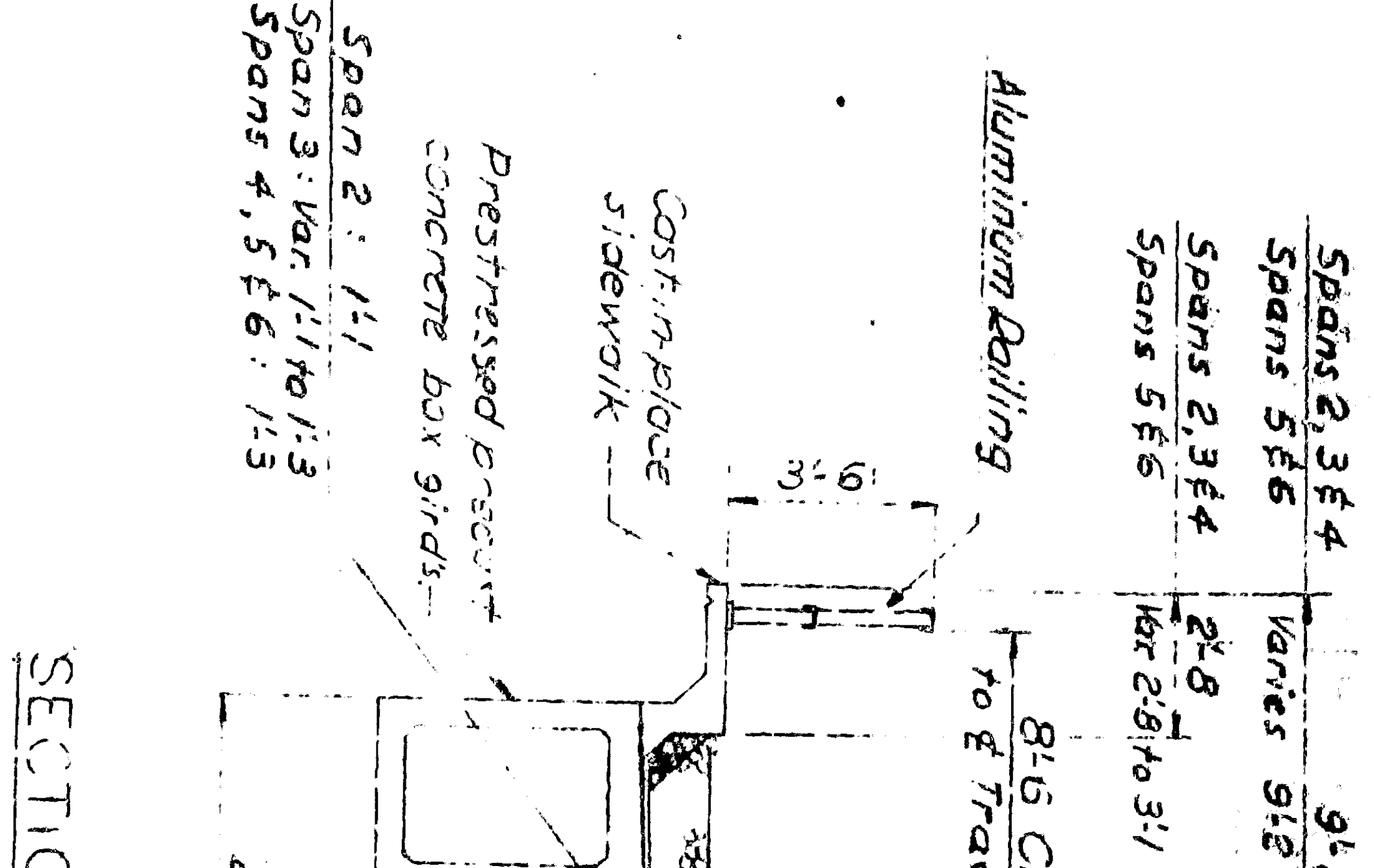
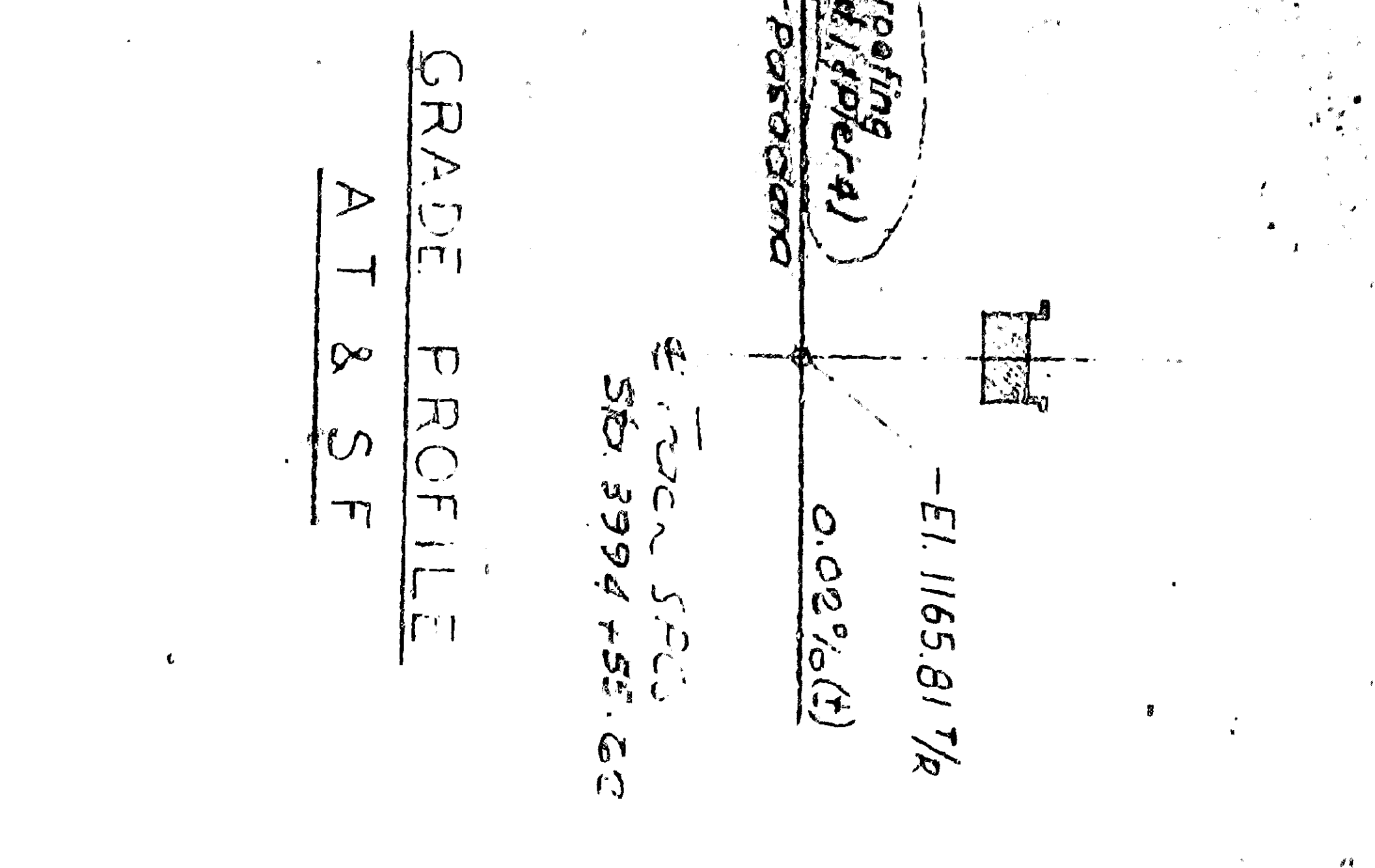
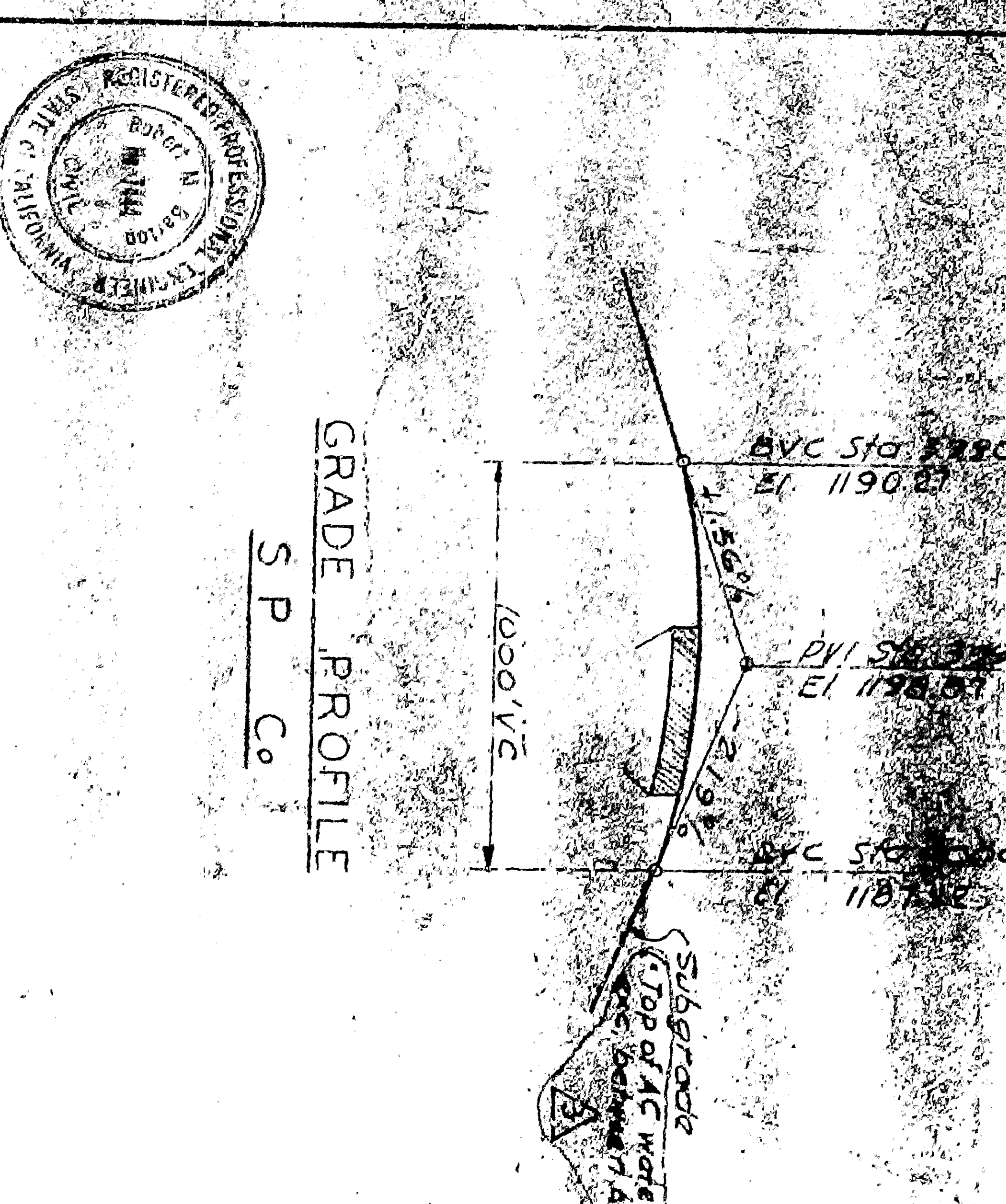
SOUTHERN PACIFIC COMPANY
 PACIFIC LINES
 CITY OF SAN BERNARDINO
 ARROW ROUTE-RIALTO AVENUE UNDERPASS
 BRIDGE WP 4500
 GENERAL PLAN & ELEVATION

AS BUILT
 SCALE: 1/4" = 1'-0"

SECTIONS A-A, B-B & C-C
 SCALE: 1/4" = 1'-0"

SECTION D-D (Span 1)
 SCALE: 1/4" = 1'-0"

SECTION E-E
 SCALE: 1/4" = 1'-0"

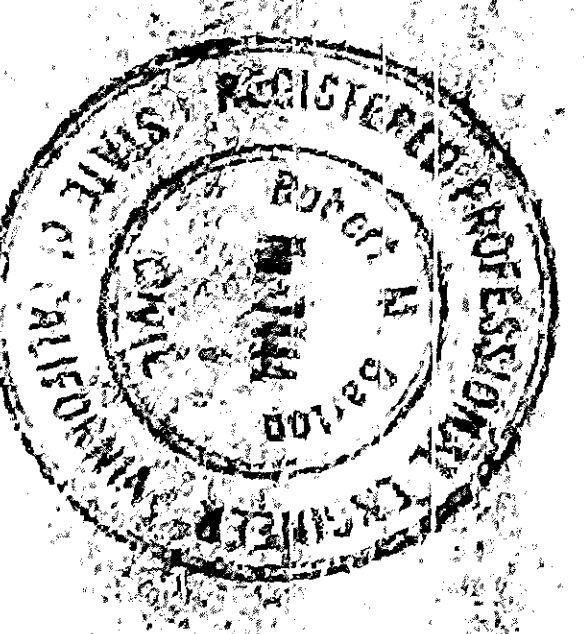


3. M. S.E. Foundation Bolt of Hoopling Right on W.E. corner of pier section at Blaino & AT&SFE E1 1168.79

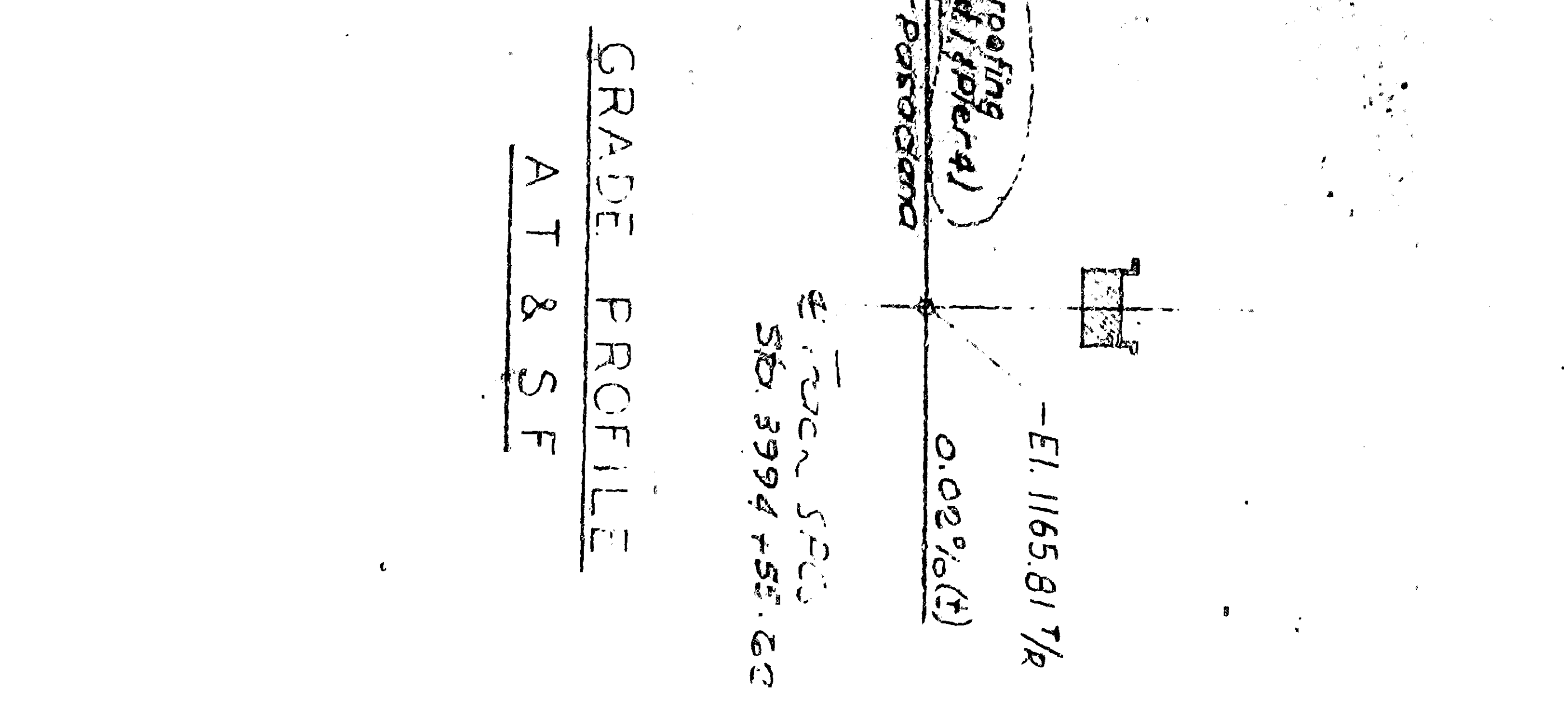
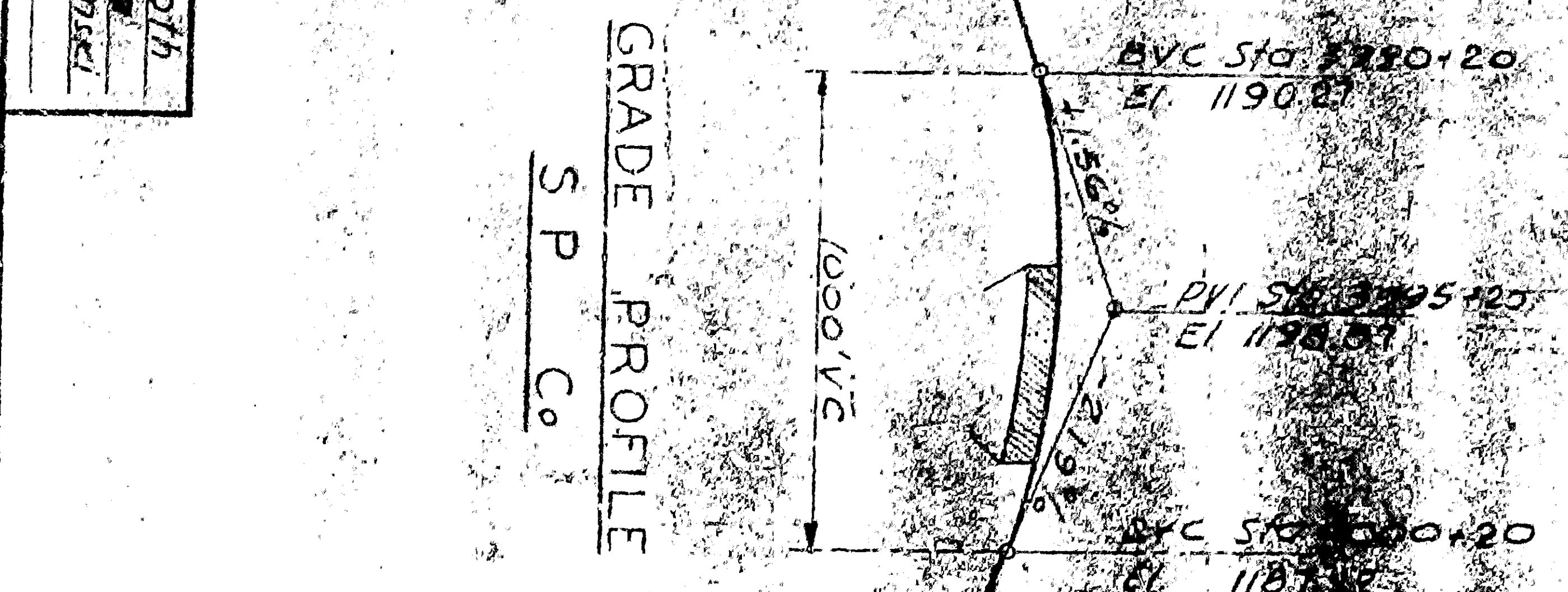
REV	DESCRIPTION	DATE
1	Add Foundation Bolt of Hoopling Right on W.E. corner of pier section at Blaino & AT&SFE E1 1168.79	1/20/66
2	Change Elevation of Pier Top	1/20/66
3	Change Elevation of Pier Top	1/20/66

Scale: 1/4" = 1'-0"

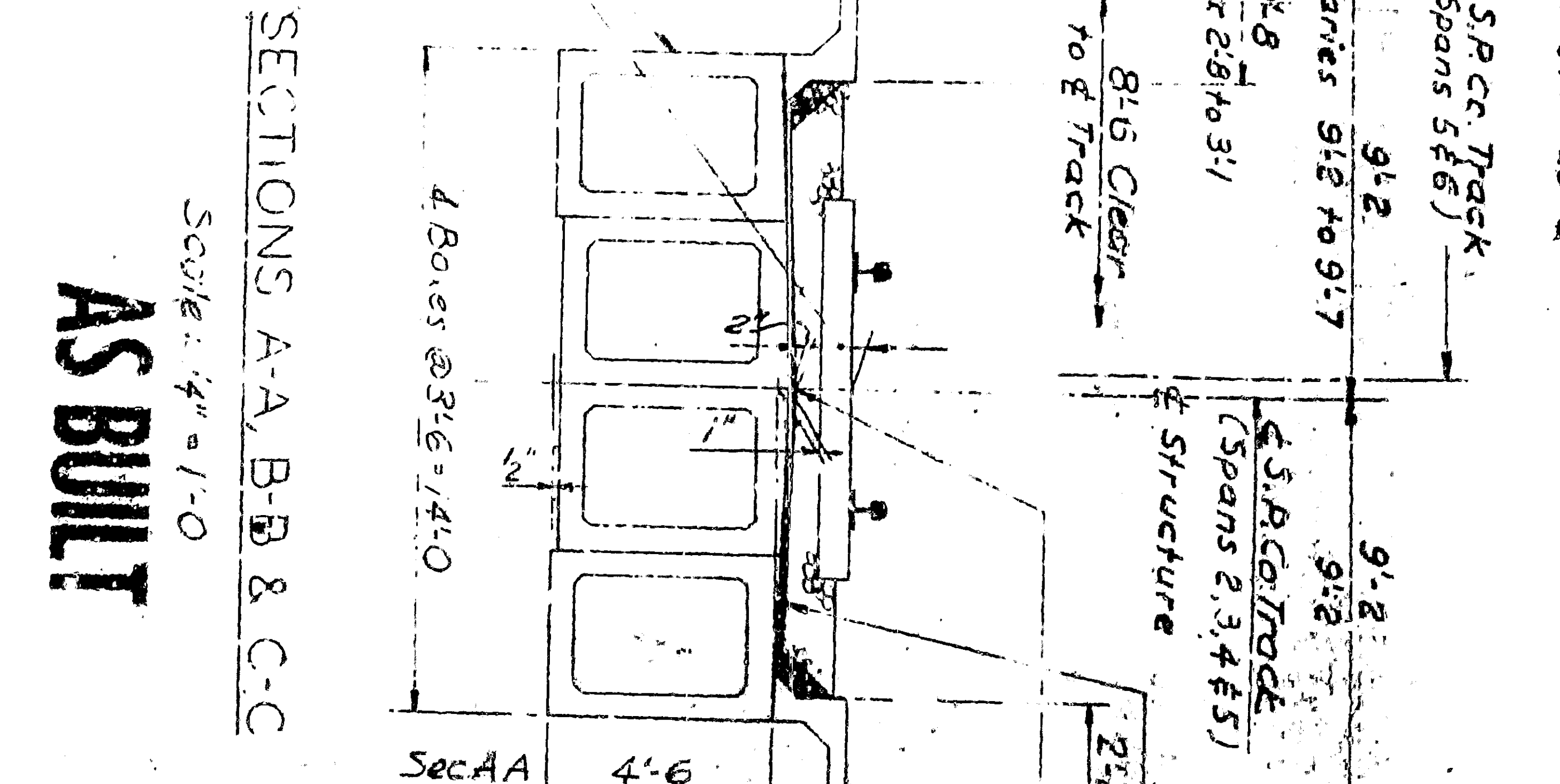
CURVE # 84.0010
 1 = 47.88
 2 = 57.90 L
 3 = 372.20
 4 = 162.50
 L = 416.17



DESIGNED BY: W. J. DeLoach
 CHECKED BY: W. J. DeLoach
 APPROVED BY: W. J. DeLoach
 DATE: 1/20/66



Aluminum Rolling
 8'-6" Clear
 to & Track
 Cast-in-place
 concrete
 Prestressed concrete
 concrete box girders
 Span 2: 11'
 Span 3: var. 11'6" / 13'
 Span 4: 5'6" / 13'



SECTIONS A-A, B-B & C-C
 SCALE: 1/4" = 1'-0"
AS BUILT

APPROVED: [Signature]
 BY: [Signature]
 TITLE: [Signature]
 CITY OF SAN BERNARDINO
 PLAN NO. [Signature]
 1966
 REGISTERED CIVIL ENGINEER NO. 13,559

SOUTHERN PACIFIC COMPANY
 PACIFIC LINES
 CITY OF SAN BERNARDINO
 ARROW ROUTE-RIALTO AVIATION
 BRIDGE WP 450C
 GENERAL PLAN & ELEVATION
 DELEUX ENGINEERS
 SAN FRANCISCO, CALIFORNIA

GRADE PROFILE
 ARROW ROUTE

GRADE PROFILE
 A T & S F

SECTIONS A-A, B-B & C-C

AS BUILT

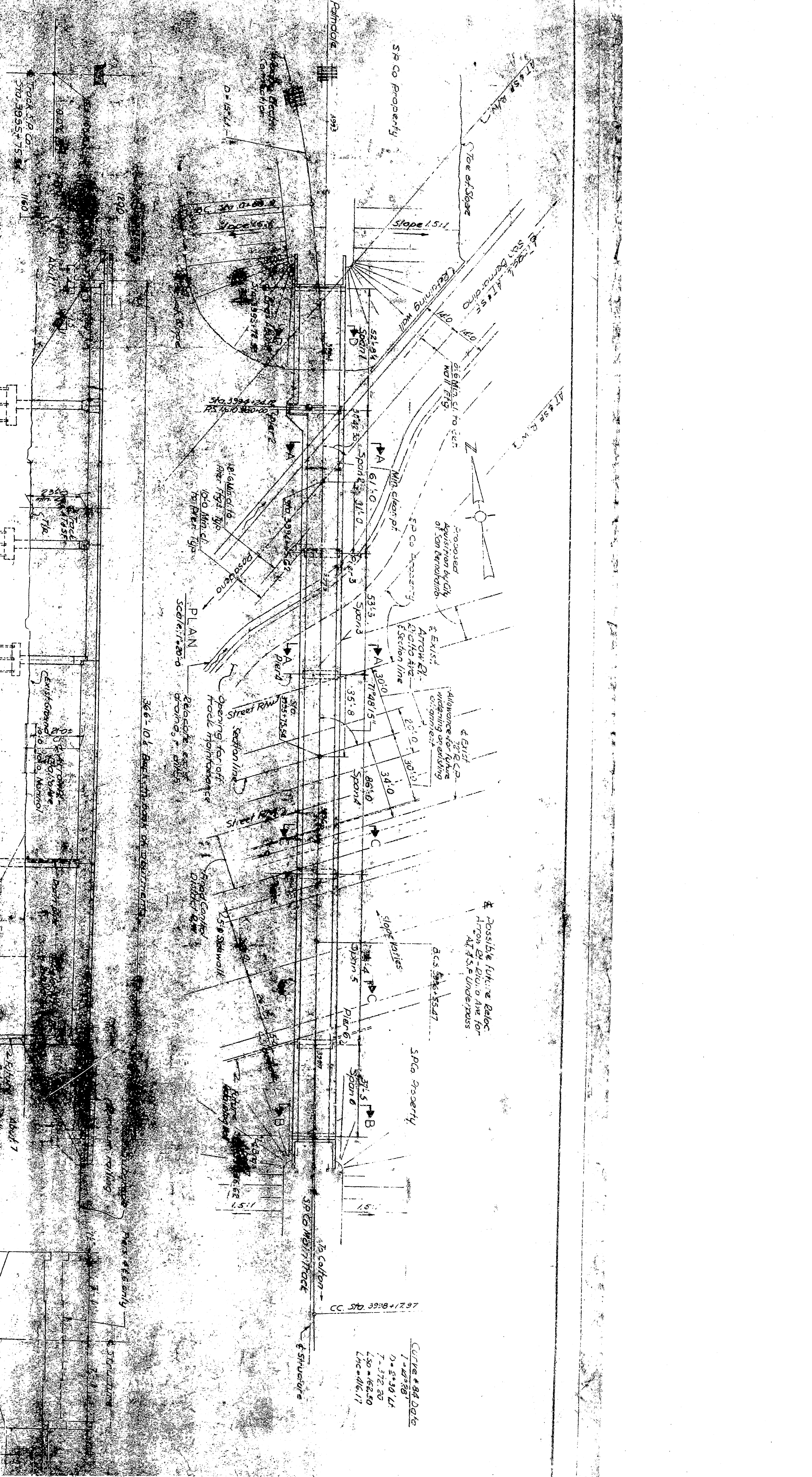
APPROVED: [Signature]

BY: [Signature]

TITLE: [Signature]

CITY OF SAN BERNARDINO

REGISTERED CIVIL ENGINEER NO. 13,559



TYPICAL PIER ELEVATION
 SCALE: 1/4" = 1'-0"

COLTON CUT-OFF

3. M. S.E. Foundation Bolt of
 Hoopling right on W.E. corner
 of pier section at Blaino &
 AT 5' E.I. 1168.78

REV	DESCRIPTION	DATE
1	ADD TORQUE ON GIRDERS	1/20/66
2	CON. ELEV. SHOWN THROUGHOUT	1/20/66
3	STEP TOP OF PIERS	1/20/66

3. M. S.E. Foundation Bolt of
 Hoopling right on W.E. corner
 of pier section at Blaino &
 AT 5' E.I. 1168.78

3. M. S.E. Foundation Bolt of
 Hoopling right on W.E. corner
 of pier section at Blaino &
 AT 5' E.I. 1168.78

3. M. S.E. Foundation Bolt of
 Hoopling right on W.E. corner
 of pier section at Blaino &
 AT 5' E.I. 1168.78

3. M. S.E. Foundation Bolt of
 Hoopling right on W.E. corner
 of pier section at Blaino &
 AT 5' E.I. 1168.78

3. M. S.E. Foundation Bolt of
 Hoopling right on W.E. corner
 of pier section at Blaino &
 AT 5' E.I. 1168.78

3. M. S.E. Foundation Bolt of
 Hoopling right on W.E. corner
 of pier section at Blaino &
 AT 5' E.I. 1168.78

3. M. S.E. Foundation Bolt of
 Hoopling right on W.E. corner
 of pier section at Blaino &
 AT 5' E.I. 1168.78

3. M. S.E. Foundation Bolt of
 Hoopling right on W.E. corner
 of pier section at Blaino &
 AT 5' E.I. 1168.78

3. M. S.E. Foundation Bolt of
 Hoopling right on W.E. corner
 of pier section at Blaino &
 AT 5' E.I. 1168.78